

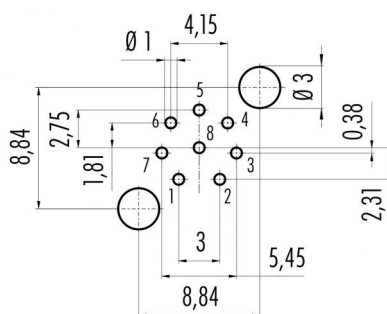
Product description M12-A male panel mount connector, Contacts: 8, shieldable, dip-solder, IP68, UL, PG9, front mounting

Area M12-A series 763
Order number 86 0531 1120 00008

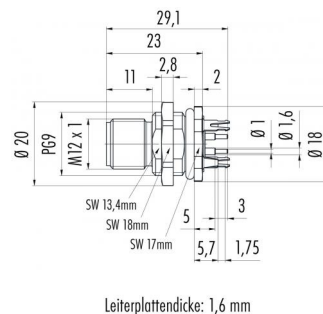
Illustration



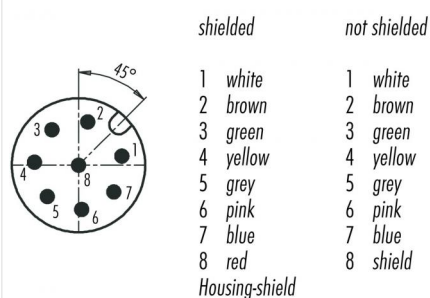
Conductor layout



Scale drawing



Contact arrangement (Plug-in side)



You can find the assembly instructions on the next page.

Technical data

General values

Notice

Please note that, due to the change from the old to the new order number, there may be deviations in the technical specifications. For questions about product details, please use the 'Contact Customer Service' form on the right.
male panel mount connector
screw
dip-solder
85 °C
-40 °C
85369010

Connector design
Connector locking system
Termination
Upper limit temperature
Lower limit temperature
Customs tariff number

Electrical values

Rated current (40 °C) 1.5 A (2 A UL)
Rated voltage 30 V
Rated impulse voltage 800 V
Pollution degree 3
Overvoltage category II
Insulating material group III
Insulation resistance > 10⁸ Ω
EMC compliance shieldable
Degree of protection IP68
Mechanical operation > 100 Mating cycles

Material

Contact material CuZn (brass)
Contact plating Au (gold)
Contact body material PA
REACH SVHC CAS 80-05-7 (4,4'-isopropylidendiphenol)
CAS 7439-92-1 (Lead)
CAS 61788-32-7 (Terphenyl, hydrogenated)

authorization/approvals

Product description	M12-A male panel mount connector, Contacts: 8, shieldable, dip-solder, IP68, UL, PG9, front mounting
Area	M12-A series 763
Order number	86 0531 1120 00008

Approval 1

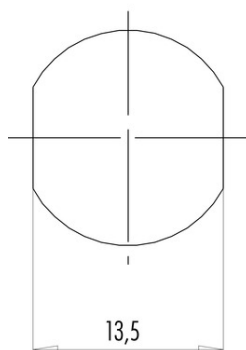
UL

Product description M12-A male panel mount connector, Contacts: 8, shieldable, dip-solder, IP68, UL, PG9, front mounting

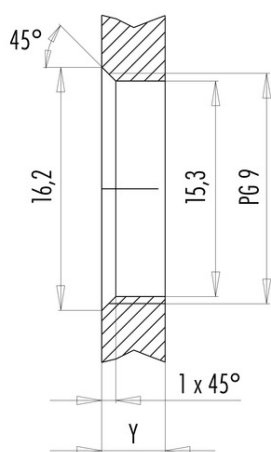
Area M12-A series 763
Order number 86 0531 1120 00008

Assembly instructions / Panel cut-out

With flats as anti-rotation device



With bore hole



Installation direction: o-ring sits on chamfer.

Tightening moment

Metall housing/Plastic housing 1,25 Nm

Thickness of wall Y (mm)		
Version	min (mm)	max (mm)
Fastened from rear	2	3,5
Front fastened	2	4,5
positioning possible ¹⁾	2	3,5
Screw clamp	2	3,5
Thread M12 x 1	2	3,0
Thread M14 x 1 ²⁾	³⁾ 1,5/ ⁴⁾ 2	6,5

Notes

- ¹⁾ Do not attach a chamfer
- ²⁾ Wall thickness:
use locknut 01-5385 up to 1,5 mm,
>1,5 mm cut thread
- ³⁾ Nut
- ⁴⁾ Thread in wall of housing

Product description	M12-A male panel mount connector, Contacts: 8, shieldable, dip-solder, IP68, UL, PG9, front mounting
Area	M12-A series 763
Order number	86 0531 1120 00008

Security notices

The connectors have been developed for applications in plant engineering, control and electrical equipment construction. The user is responsible for checking whether the connectors can also be used in other areas of application.

Plug connectors with enclosure protection IP 67 and IP 68 are not suitable for use under water. When used outdoors, the plug connectors must be protected separately against corrosion. For further information on the IP protection classes, please refer to the "Technical Information" download centre.