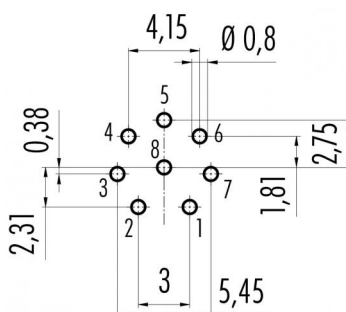


Product description	M12-A female panel mount connector, Contacts: 8, unshielded, dip-solder, IP68, UL, PG9, front mounting
Area	M12-A series 763
Order number	86 4832 3000 00008

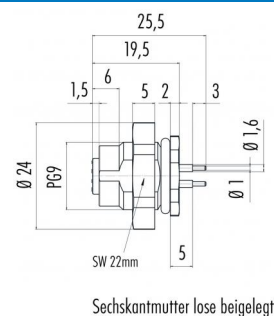
## Illustration



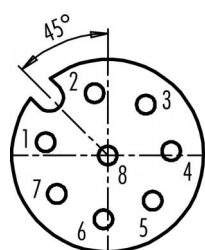
## Conductor layout



## Scale drawing



## Contact arrangement (Plug-in side)



- 1 white
- 2 brown
- 3 green
- 4 yellow
- 5 grey
- 6 pink
- 7 blue
- 8 red

You can find the assembly instructions on the next page.

## Technical data

## General values

## Notice

Please note that, due to the change from the old to the new order number, there may be deviations in the technical specifications. For questions about product details, please use the 'Contact Customer Service' form on the right.

## Connector design

Connector locking system  
Termination  
Upper limit temperature  
Lower limit temperature  
Customs tariff number

screw  
dip-solder  
85 °C  
-40 °C  
85369010

## Electrical values

Rated current (40 °C)  
Rated voltage  
Rated voltage UL  
Rated impulse voltage  
Pollution degree  
Overvoltage category  
Insulating material group  
Insulation resistance  
EMC compliance  
Degree of protection  
Mechanical operation

1.5 A (2 A UL)  
30 V  
60  
800 V  
3  
II  
III  
> 10<sup>8</sup> Ω  
unshielded  
IP68  
> 100 Mating cycles

## Material

Contact material  
Contact plating  
Contact body material  
Housing material  
Locking material  
REACH SVHC

CuSn (bronze)  
Au (gold)  
PA  
PA  
plastic  
CAS 7439-92-1 (Lead)

## authorization/approvals

Approval 1

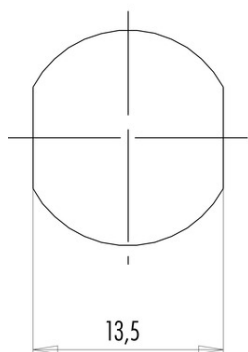
UL

Product description M12-A female panel mount connector, Contacts: 8, unshielded, dip-solder, IP68, UL, PG9, front mounting

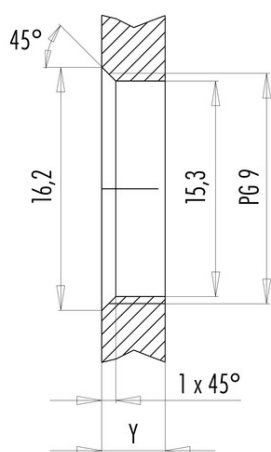
Area M12-A series 763  
Order number 86 4832 3000 00008

## Assembly instructions / Panel cut-out

With flats as anti-rotation device



With bore hole



Installation direction: o-ring sits on chamfer.

### Tightening moment

Metall housing/Plastic housing 1,25 Nm

Thickness of wall Y (mm)		
Version	min (mm)	max (mm)
Fastened from rear	2	3,5
Front fastened	2	4,5
positioning possible <sup>1)</sup>	2	3,5
Screw clamp	2	3,5
Thread M12 x 1	2	3,0
Thread M14 x 1 <sup>2)</sup>	<sup>3)</sup> 1,5/ <sup>4)</sup> 2	6,5

### Notes

- <sup>1)</sup> Do not attach a chamfer
- <sup>2)</sup> Wall thickness:  
use locknut 01-5385 up to 1,5 mm,  
>1,5 mm cut thread
- <sup>3)</sup> Nut
- <sup>4)</sup> Thread in wall of housing

Product description	M12-A female panel mount connector, Contacts: 8, unshielded, dip-solder, IP68, UL, PG9, front mounting
Area	M12-A series 763
Order number	86 4832 3000 00008

## Security notices

The connectors have been developed for applications in plant engineering, control and electrical equipment construction. The user is responsible for checking whether the connectors can also be used in other areas of application.

Plug connectors with enclosure protection IP 67 and IP 68 are not suitable for use under water. When used outdoors, the plug connectors must be protected separately against corrosion. For further information on the IP protection classes, please refer to the "Technical Information" download centre.