

Product description

Contacts: 6+PE, 7 x 0.75 PVC: female cable connector injection-moulded cable, cable length 7 m

Area

RD24 Power Series 692/693

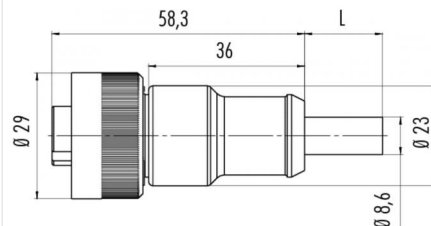
Order number

79 0236 070 07

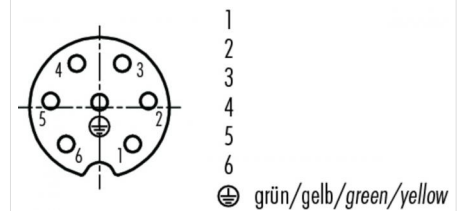
Illustration



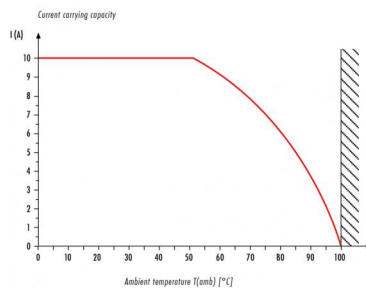
Scale drawing



Contact arrangement



Derating curve



You can find the component part drawing and assembly instructions on the next page.

Technical data

General values

Connector design	female cable connector
Connector locking system	bolted
Termination	moulded on cable
Wire gauge (mm)	0,75 mm ²
Wire gauge (AWG)	20
Upper limit temperature	80 °C
Lower limit temperature	-25 °C

Cable data

Sheath material	PVC
Single-lead insulation	PVC sw 1, sw 2, sw 3, grün/gelb
Single-lead structure	28x0,25 mm
Conductor resistance	-
Bending radius, fixed cable	120 mm
Bending radius, moving cable	60 mm

Electrical values

Rated current (40 °C)	8 A
Rated voltage	250 V
Rated impulse voltage	4000 V
Pollution degree	3
Overvoltage category	III
Insulating material group	III
Volume resistivity	≤ 5 mΩ
Insulation resistance	≥ 10 ¹⁰ Ω
EMC compliance	Shielding is not possible
Degree of protection	IP67
Mechanical operation	> 500 Mating cycles

Material

Contact material	CuZn (brass)
Contact plating	Ag (silver)
Contact body material	PA 12
Housing material	PUR

Product description

Contacts: 6+PE, 7 x 0.75 PVC: female cable connector injection-moulded cable, cable length 7 m

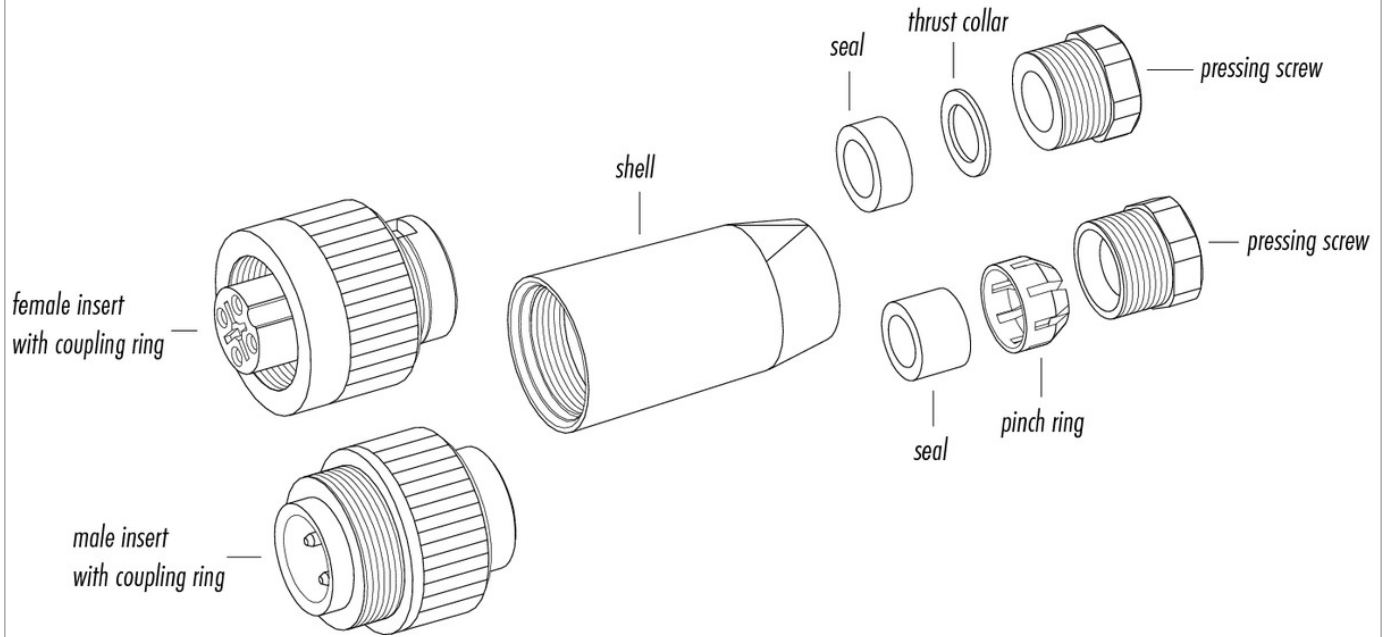
Area

RD24 Power Series 692/693

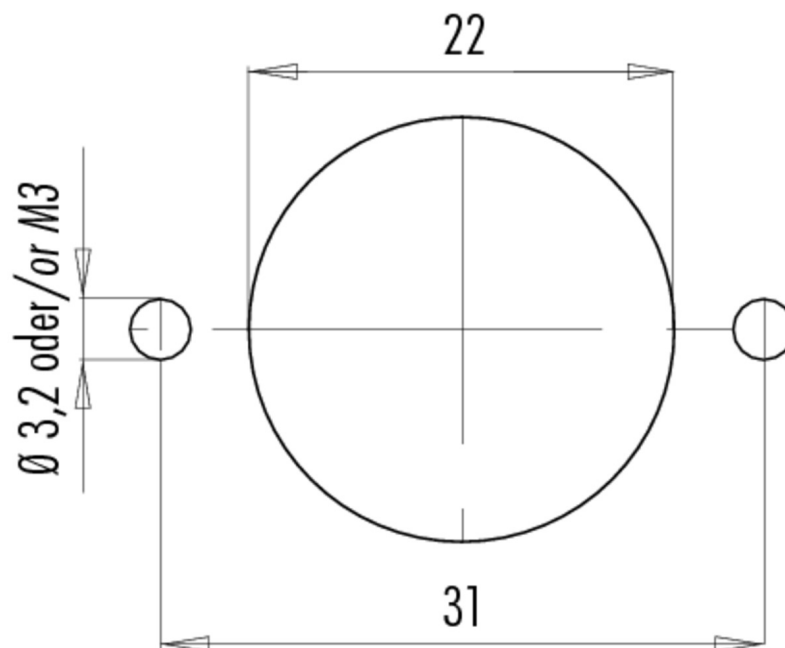
Order number

79 0236 070 07

Component part drawing



Assembly instructions / Panel cut-out



Product description	Contacts: 6+PE, 7 x 0.75 PVC: female cable connector injection-moulded cable, cable length 7 m
Area	RD24 Power Series 692/693
Order number	79 0236 070 07

Security notices

The connector must not be connected or separated under load. Non-observance and incorrect use can result in personal injury.

The connectors are designed for use in plant, control system and electrical equipment. The end user is responsible for checking whether the connectors are suitable for use in other applications.

Connectors used in electrical circuits containing hazardous life parts must only be assembled and used by or under the supervision of persons with the requisite electrotechnical training, taking the applicable regulations and standards into account.

Connectors with degree of protection IP 67 and IP 68 are not suitable for use under water. When used outdoors, the connectors must be separately protected against corrosion. For further information about IP degrees of protection refer to 'Technical support' in the Download Centre.

To lock the cable connector to the equipment connector, the threaded ring is tightened until it is 'finger-tight' (approx. 50 cNm).