
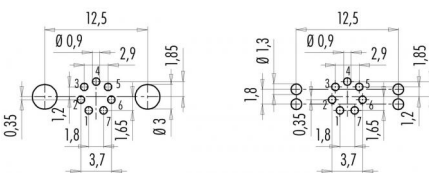
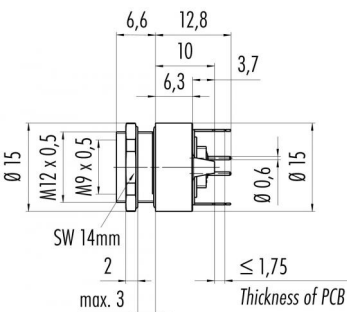


Illustration	Conductor layout	Scale drawing
		

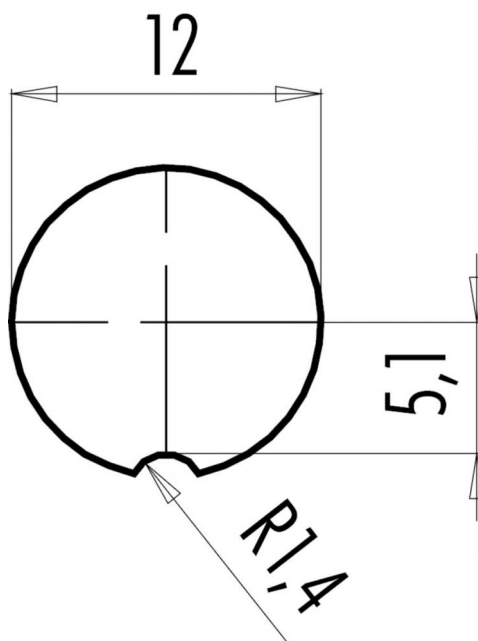
1 white  
2 brown  
3 green  
4 yellow  
5 grey  
6 pink  
7 blue

## Technical data

Contact material	CuSn (bronze)
Contact plating	Au (gold)
Contact body material	PA (UL94 V-0)
REACH SVHC	CAS 7439-92-1 (Lead)

Product description	M9 IP67 female panel mount connector, Contacts: 7, shieldable, dip-solder, IP67, front mounting
Area	M9 IP67 series 712
Order number	09 0424 35 07

### Assembly instructions / Panel cut-out



Product description	M9 IP67 female panel mount connector, Contacts: 7, shieldable, dip-solder, IP67, front mounting
Area	M9 IP67 series 712
Order number	09 0424 35 07

## Security notices

The connector must not be plugged or unplugged under load. Non-observance and improper use can result in personal injury.

The connectors have been developed for applications in plant engineering, control and electrical equipment construction. The user is responsible for checking whether the connectors can also be used in other areas of application.

Plug connectors with enclosure protection IP 67 and IP 68 are not suitable for use under water. When used outdoors, the plug connectors must be protected separately against corrosion. For further information on the IP protection classes, please refer to the "Technical Information" download centre.