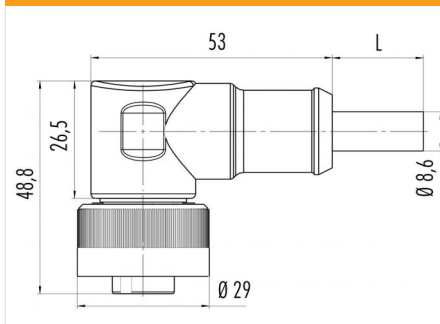


Product description	RD24 female angled connector, Contacts: 6+PE, unshielded, moulded on cable, IP67, PVC black, 7 x 0.75 mm <sup>2</sup>
Area	RD24 series 692
Order number	79 0238 20 07

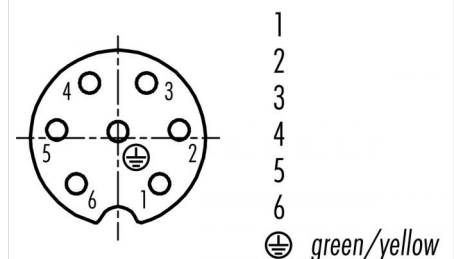
## Illustration



## Scale drawing



## Contact arrangement (Plug-in side)



You can find the component part drawing and assembly instructions on the next page.

## Technical data

### General values

Connector design	female angled connector
Connector locking system	screw
Termination	moulded on cable
Wire gauge (mm)	0.75 mm <sup>2</sup>
Wire gauge (AWG)	AWG 18
Upper limit temperature	80 °C
Lower limit temperature	-25 °C
Customs tariff number	85444290

### Cable data

Cable length	2 m
Sheath material	PVC
Single-lead insulation	PVC
Halogen free	No
Single-lead structure	24x0,2 mm
Cable color	black
Conductor resistance	-
Temperature range, moving cable, °C from -50°C	
Temperature range, moving cable, °C to +80°C	
Temperature range, fixed cable, °C from -20°C	
Temperature range, fixed cable, °C to +80°C	

### Electrical values

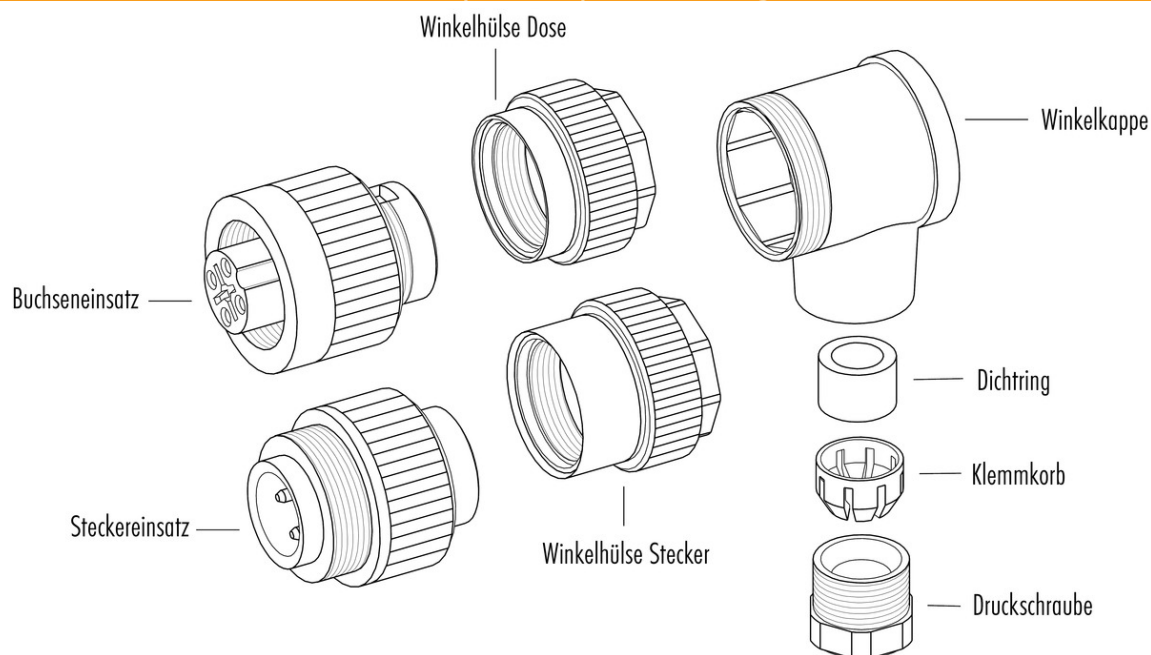
Rated current (40 °C)	8 A
Rated voltage	250 V
Rated impulse voltage	4000 V
Pollution degree	3
Overvoltage category	III
Insulating material group	III
Insulation resistance	≥ 10 <sup>10</sup> Ω
EMC compliance	unshielded
Degree of protection	IP67
Mechanical operation	> 500 Mating cycles

### Material

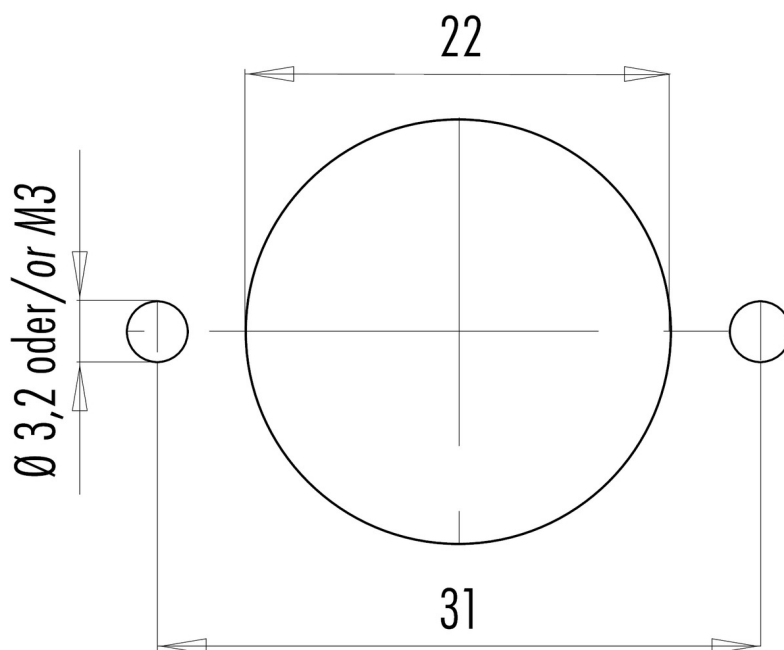
Contact material	CuZn (brass)
Contact plating	Ag (silver)
Contact body material	PA12
REACH SVHC	CAS 7439-92-1 (Lead)

Product description	RD24 female angled connector, Contacts: 6+PE, unshielded, moulded on cable, IP67, PVC black, 7 x 0.75 mm <sup>2</sup>
Area	RD24 series 692
Order number	79 0238 20 07

## Component part drawing



## Assembly instructions / Panel cut-out



Product description	RD24 female angled connector, Contacts: 6+PE, unshielded, moulded on cable, IP67, PVC black, 7 x 0.75 mm <sup>2</sup>
Area	RD24 series 692
Order number	79 0238 20 07

## Security notices

The connector must not be plugged or unplugged under load. Non-observance and improper use can result in personal injury.

The connectors have been developed for applications in plant engineering, control and electrical equipment construction. The user is responsible for checking whether the connectors can also be used in other areas of application.

Connectors which are used in circuits with voltages dangerous to the touch may only be installed and used by, or under the supervision of, persons with electrical engineering training, taking into account the applicable regulations and standards.

Plug connectors with enclosure protection IP 67 and IP 68 are not suitable for use under water. When used outdoors, the plug connectors must be protected separately against corrosion. For further information on the IP protection classes, please refer to the "Technical Information" download centre. To lock the cable connector with the device connector, the threaded ring is tightened "hand-tight" (approx. 50 cNm).