

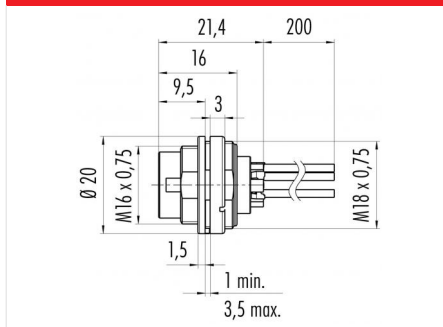
Product description M16 IP40 male panel mount connector, Contacts: 8 DIN, unshielded, single wires, IP40

Area M16 IP40 series 680
Order number 09 0473 702 08

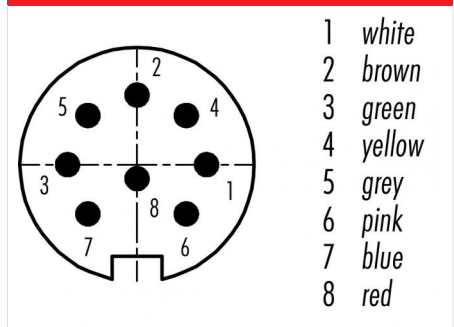
Illustration



Scale drawing



Contact arrangement (Plug-in side)



You can find the assembly instructions on the next page.

Technical data

General values

Connector design	male panel mount connector
Connector locking system	screw
Termination	single wires
Wire gauge (AWG)	AWG 22
Upper limit temperature	85 °C
Lower limit temperature	-30 °C
Customs tariff number	85369010

Electrical values

Rated current (40 °C)	5 A
Rated voltage	100 V
Rated impulse voltage	1200 V
Pollution degree	1
Overvoltage category	I
Insulating material group	II
Insulation resistance	$\geq 10^{10} \Omega$
EMC compliance	unshielded
Degree of protection	IP40
Mechanical operation	> 500 Mating cycles

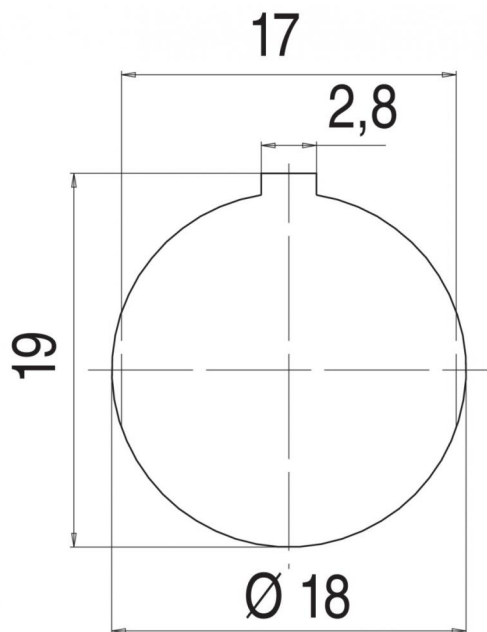
Material

Contact material	CuSn (bronze)
Contact plating	Ag (silver)
Contact body material	PBT (UL94 V-0)
REACH SVHC	CAS 7439-92-1 (Lead)

Product description M16 IP40 male panel mount connector, Contacts: 8 DIN, unshielded, single wires, IP40

Area M16 IP40 series 680
Order number 09 0473 702 08

Assembly instructions / Panel cut-out



Product description	M16 IP40 male panel mount connector, Contacts: 8 DIN, unshielded, single wires, IP40
Area	M16 IP40 series 680
Order number	09 0473 702 08

Security notices

The connector must not be plugged or unplugged under load. Non-observance and improper use can result in personal injury.

The connectors have been developed for applications in plant engineering, control and electrical equipment construction. The user is responsible for checking whether the connectors can also be used in other areas of application.