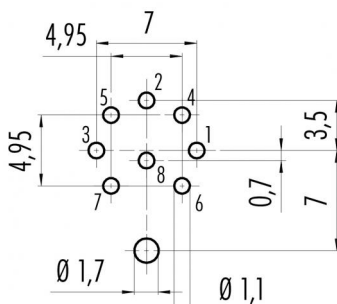


| | |
|---------------------|--|
| Product description | M16 IP40 male panel mount connector, Contacts: 8 DIN, shieldable, dip-solder, IP40, front mounting |
| Area | M16 IP40 series 680 |
| Order number | 09 0473 290 08 |

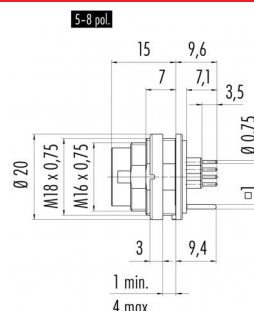
Illustration



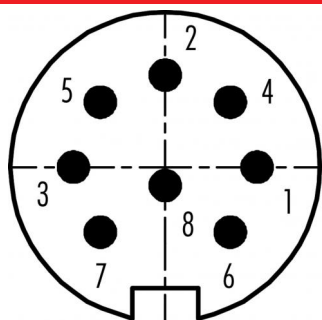
Conductor layout



Scale drawing



Contact arrangement (Plug-in side)



You can find the assembly instructions on the next page.

Technical data

General values

| | |
|--------------------------|----------------------------|
| Connector design | male panel mount connector |
| Connector locking system | screw |
| Termination | dip-solder |
| Upper limit temperature | 85 °C |
| Lower limit temperature | -40 °C |
| Customs tariff number | 85369010 |

Electrical values

| | |
|---------------------------|-----------------------|
| Rated current (40 °C) | 5 A |
| Rated voltage | 60 V |
| Rated impulse voltage | 500 V |
| Pollution degree | 1 |
| Overvoltage category | I |
| Insulating material group | III |
| Insulation resistance | $\geq 10^{10} \Omega$ |
| EMC compliance | shieldable |
| Degree of protection | IP40 |
| Mechanical operation | > 500 Mating cycles |

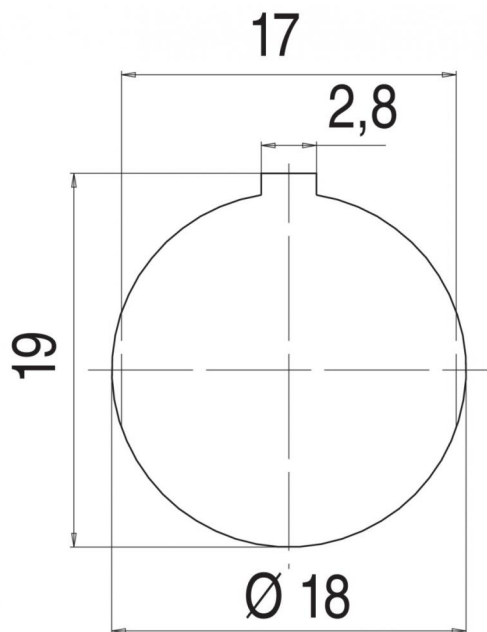
Material

| | |
|-----------------------|----------------------|
| Contact material | CuZn (brass) |
| Contact plating | Ag (silver) |
| Contact body material | PBT (UL94 V-0) |
| REACH SVHC | CAS 7439-92-1 (Lead) |

Product description M16 IP40 male panel mount connector, Contacts: 8 DIN, shieldable, dip-solder, IP40, front mounting

Area M16 IP40 series 680
Order number 09 0473 290 08

Assembly instructions / Panel cut-out



| | |
|---------------------|--|
| Product description | M16 IP40 male panel mount connector, Contacts: 8 DIN, shieldable, dip-solder, IP40, front mounting |
| Area | M16 IP40 series 680 |
| Order number | 09 0473 290 08 |

Security notices

The connectors have been developed for applications in plant engineering, control and electrical equipment construction. The user is responsible for checking whether the connectors can also be used in other areas of application.