

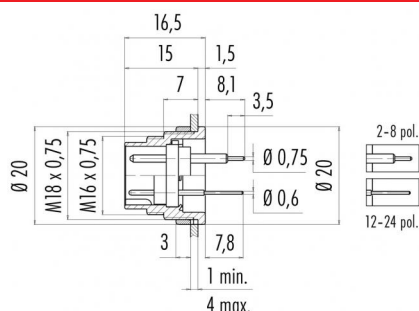
Product description M16 IP40 male panel mount connector, Contacts: 6 DIN, unshielded, dip-solder, IP40, front mounting

Area M16 IP40 series 680
Order number 09 0323 99 06

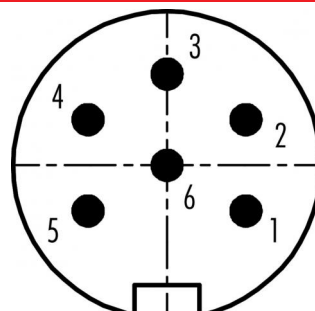
Illustration



Scale drawing



Contact arrangement (Plug-in side)



You can find the assembly instructions on the next page.

Technical data

General values

| | |
|--------------------------|----------------------------|
| Connector design | male panel mount connector |
| Connector locking system | screw |
| Termination | dip-solder |
| Upper limit temperature | 85 °C |
| Lower limit temperature | -40 °C |
| Customs tariff number | 85369010 |

Electrical values

| | |
|---------------------------|-----------------------|
| Rated current (40 °C) | 5 A |
| Rated voltage | 250 V |
| Rated impulse voltage | 1500 V |
| Pollution degree | 1 |
| Overvoltage category | I |
| Insulating material group | III |
| Insulation resistance | $\geq 10^{10} \Omega$ |
| EMC compliance | unshielded |
| Degree of protection | IP40 |
| Mechanical operation | > 500 Mating cycles |

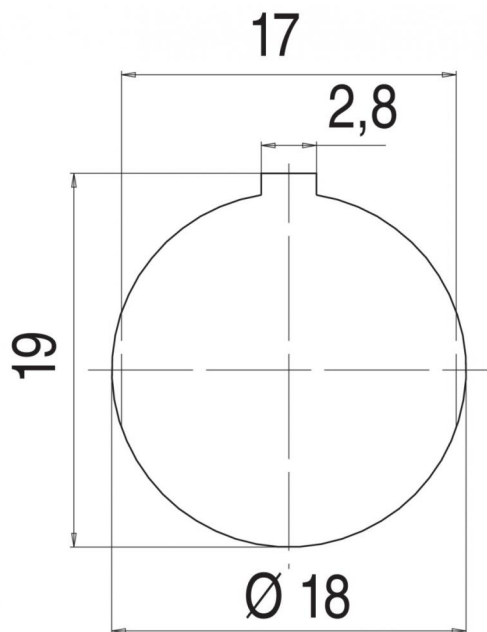
Material

| | |
|-----------------------|-----------------------------|
| Contact material | CuZn (brass) |
| Contact plating | Au (gold) |
| Contact body material | PBT (UL94 V-0) |
| Housing material | Zinc die-cast nickel-plated |
| REACH SVHC | CAS 7439-92-1 (Lead) |

Product description M16 IP40 male panel mount connector, Contacts: 6 DIN, unshielded, dip-solder, IP40, front mounting

Area M16 IP40 series 680
Order number 09 0323 99 06

Assembly instructions / Panel cut-out



| | |
|---------------------|--|
| Product description | M16 IP40 male panel mount connector, Contacts: 6 DIN, unshielded, dip-solder, IP40, front mounting |
| Area | M16 IP40 series 680 |
| Order number | 09 0323 99 06 |

Security notices

The connector must not be plugged or unplugged under load. Non-observance and improper use can result in personal injury.

The connectors have been developed for applications in plant engineering, control and electrical equipment construction. The user is responsible for checking whether the connectors can also be used in other areas of application.

To protect against unintentional opening of the connector, the thread between the housing and the connector head must be secured with a suitable cyanoacrylate adhesive when used in circuits with voltages dangerous to the touch. This does not apply to connectors used in SELV and PELV circuits according to IEC 61140 (EN 61140, VDE 0140-1).

The plug connector is not suitable for mains voltages. Please observe the pollution degree and the overvoltage category. For further information, please refer to the download center "Technical Information".