

166294-1 ✓ ACTIVE

AMPLIMITE

TE Internal #: 166294-1

TE Internal Description: 20DF CRIMP PIN

[View on TE.com >](#)



Connectors > D-Shaped Connectors > D-Sub Connector Contacts



Contact Type: **Pin**

Contact Size: **20**

Contact Base Material: **Brass**

Contact Mating Area Plating Material: **Gold**

Termination Method to Wire & Cable: **Crimp**

Features

Product Type Features

Product Type	Contact
Grade	Standard
Connector System	Cable-to-Cable
Connector & Contact Terminates To	Wire & Cable

Body Features

Color Code	Red
------------	-----

Contact Features

Pin Diameter	1 mm
Contact Mating Area Plating Thickness	.76 μ m
Contact Underplating Material	Nickel
PCB Contact Termination Area Plating Material	Tin
Contact Type	Pin
Contact Size	20
Contact Base Material	Brass
Contact Mating Area Plating Material	Gold

Contact Current Rating (Max)	1.2 A
------------------------------	-------

Termination Features

Termination Method to Wire & Cable	Crimp
------------------------------------	-------

Mechanical Attachment

Contact Retention Type Within Housing	Snap-In
---------------------------------------	---------

Wire Insulation Support	With
-------------------------	------

Dimensions

Insulation Diameter (Max)	1.02 mm
---------------------------	---------

Accepts Wire Insulation Diameter Range	.76 – 1.02 mm [.03 – .04 in]
--	------------------------------

Wire Size	.08 – .22 mm ²
-----------	---------------------------

Usage Conditions

Operating Temperature Range	-55 – 105 °C [-67 – 221 °F]
-----------------------------	-----------------------------

Operation/Application

Circuit Application	Signal
---------------------	--------

Packaging Features

Packaging Quantity	500
--------------------	-----

Packaging Method	Loose Piece
------------------	-------------

Product Compliance

[For compliance documentation, visit the product page on TE.com>](#)

EU RoHS Directive 2011/65/EU	Compliant
------------------------------	-----------

EU ELV Directive 2000/53/EC	Compliant
-----------------------------	-----------

China RoHS 2 Directive MIIT Order No 32, 2016	No Restricted Materials Above Threshold
---	---

EU REACH Regulation (EC) No. 1907/2006	Current ECHA Candidate List: JUL 2019 (201) Candidate List Declared Against: JUL 2019 (201) Does not contain REACH SVHC
--	---

EU REACH Regulation (EC) No. 1907/2006	Current ECHA Candidate List: JUL 2019 (201) Candidate List Declared Against: JUL 2019 (201)
--	--

Halogen Content	Low Halogen - Br, Cl, F, I < 900 ppm per homogenous material. Also BFR/CFR/PVC Free
-----------------	---

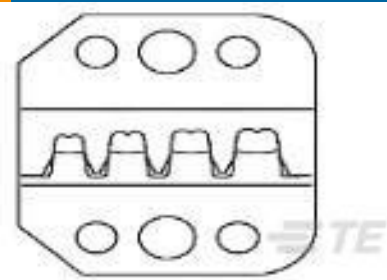
Solder Process Capability

Not applicable for solder process capability

Product Compliance Disclaimer

This information is provided based on reasonable inquiry of our suppliers and represents our current actual knowledge based on the information they provided. This information is subject to change. The part numbers that TE has identified as EU RoHS compliant have a maximum concentration of 0.1% by weight in homogenous materials for lead, hexavalent chromium, mercury, PBB, PBDE, DBP, BBP, DEHP, DIBP, and 0.01% for cadmium, or qualify for an exemption to these limits as defined in the Annexes of Directive 2011/65/EU (RoHS2). Finished electrical and electronic equipment products will be CE marked as required by Directive 2011/65/EU. Components may not be CE marked. Additionally, the part numbers that TE has identified as EU ELV compliant have a maximum concentration of 0.1% by weight in homogenous materials for lead, hexavalent chromium, and mercury, and 0.01% for cadmium, or qualify for an exemption to these limits as defined in the Annexes of Directive 2000/53/EC (ELV). Regarding the REACH Regulations, TE's information on SVHC in articles for this part number is still based on the European Chemical Agency (ECHA) 'Guidance on requirements for substances in articles' (Version: 2, April 2011), applying the 0.1% weight on weight concentration threshold at the finished product level. TE is aware of the European Court of Justice ruling of September 10th, 2015 also known as O5A (Once An Article Always An Article) stating that, in case of 'complex object', the threshold for a SVHC must be applied to both the product as a whole and simultaneously to each of the articles forming part of its composition. TE has evaluated this ruling based on the new ECHA "Guidance on requirements for substances in articles" (June 2017, version 4.0) and will be updating its statements accordingly.

Compatible Parts



TE Model / Part # 58448-3
PRO-CRIMPER DIE



TE Model / Part # 91503-1
CERTICRIMP 2,SAHT
HD20 20-28



TE Model / Part # 91285-1
INSERT/EXTRACT TOOL
ASSEMBLY



TE Model / Part # 58448-2
PRO CR. ASSY AMPLIMITE
IS 9357

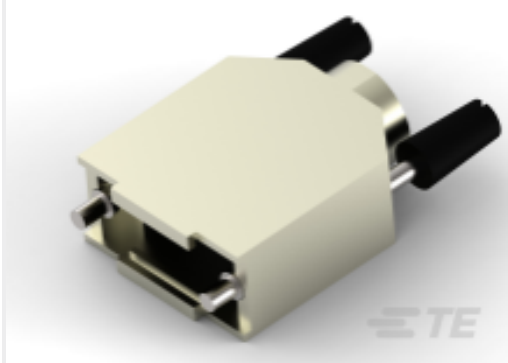


TE Model / Part # 1579007-
9
EXTRACTION TOOL

Customers Also Bought



TE Model / Part #169341-1
HANDTOOL (HD-20)



TE Model / Part #5-
1478762-1
Metal backshell 9 way Top
Entry-KIT



TE Model / Part #1534809-1
HD20 COVER KIT 25POS
WITH CABLE



TE Model / Part #1534805-1
HD20 COVER KIT 9POS
WITH CABLE



TE Model / Part #167294-1
25P HDP20 PLUG ASSY



TE Model / Part #167293-1
15P.HDP20 PLUG ASSY



TE Model / Part #166292-1
20DF COSI SOCKET



TE Model / Part #167292-1
09P.HDP20 PLUG ASSY



TE Model / Part #166293-1
LP HD20 COSI PIN
CONTACT DF; 24-20 AWG



TE Model / Part #166291-1
20DF COSI SOCKET

Documents

Product Drawings

20DF CRIMP PIN

English

CAD Files

3D PDF

3D

Customer View Model

[ENG_CVM_CVM_166294-1_AB.2d_dxf.zip](#)

English

Customer View Model

[ENG_CVM_CVM_166294-1_AB.3d_igs.zip](#)

English

Customer View Model

[ENG_CVM_CVM_166294-1_AB.3d_stp.zip](#)

English

Datasheets & Catalog Pages

[AMPLIMITE Subminiature D Connectors - Subminiature D Connectors for Cable Mounting](#)

English

Product Specifications

Application Specification

English

Product Environmental Compliance

TE Material Declaration

English

