

Product description

Contacts: 3+PE, 4 x 1.5 PVC: female cable connector injection-moulded cable, cable length 5 m

Area

RD24 Power Series 692/693

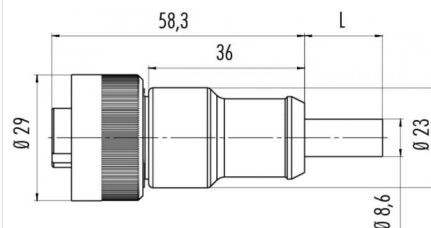
Order number

79 0232 050 04

**Illustration**



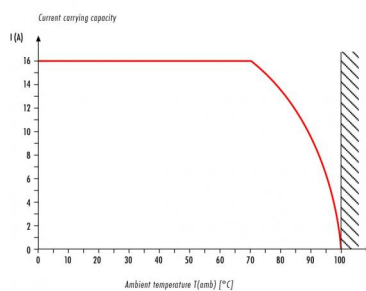
**Scale drawing**



**Contact arrangement**



**Derating curve**



**You can find the component part drawing and assembly instructions on the next page.**

**Technical data**

**General values**

Connector design	female cable connector
Connector locking system	bolted
Termination	moulded on cable
Wire gauge (mm)	1,50 mm <sup>2</sup>
Wire gauge (AWG)	16
Upper limit temperature	80 °C
Lower limit temperature	-25 °C

**Cable data**

Sheath material	PVC
Single-lead insulation	PVC sw 1, sw 2, sw 3, grün/gelb
Single-lead structure	28x0,25 mm
Conductor resistance	-
Bending radius, fixed cable	120 mm
Bending radius, moving cable	60 mm

**Electrical values**

Rated current (40 °C)	16 A
Rated voltage	400 V
Rated impulse voltage	6000 V
Pollution degree	3
Overvoltage category	III
Insulating material group	III
Volume resistivity	≤ 5 mΩ
Insulation resistance	≥ 10 <sup>10</sup> Ω
EMC compliance	Shielding is not possible
Degree of protection	IP67
Mechanical operation	> 500 Mating cycles

**Material**

Contact material	CuZn (brass)
Contact plating	Ag (silver)
Contact body material	PA 12
Housing material	PUR

Product description

Contacts: 3+PE, 4 x 1.5 PVC: female cable connector injection-moulded cable, cable length 5 m

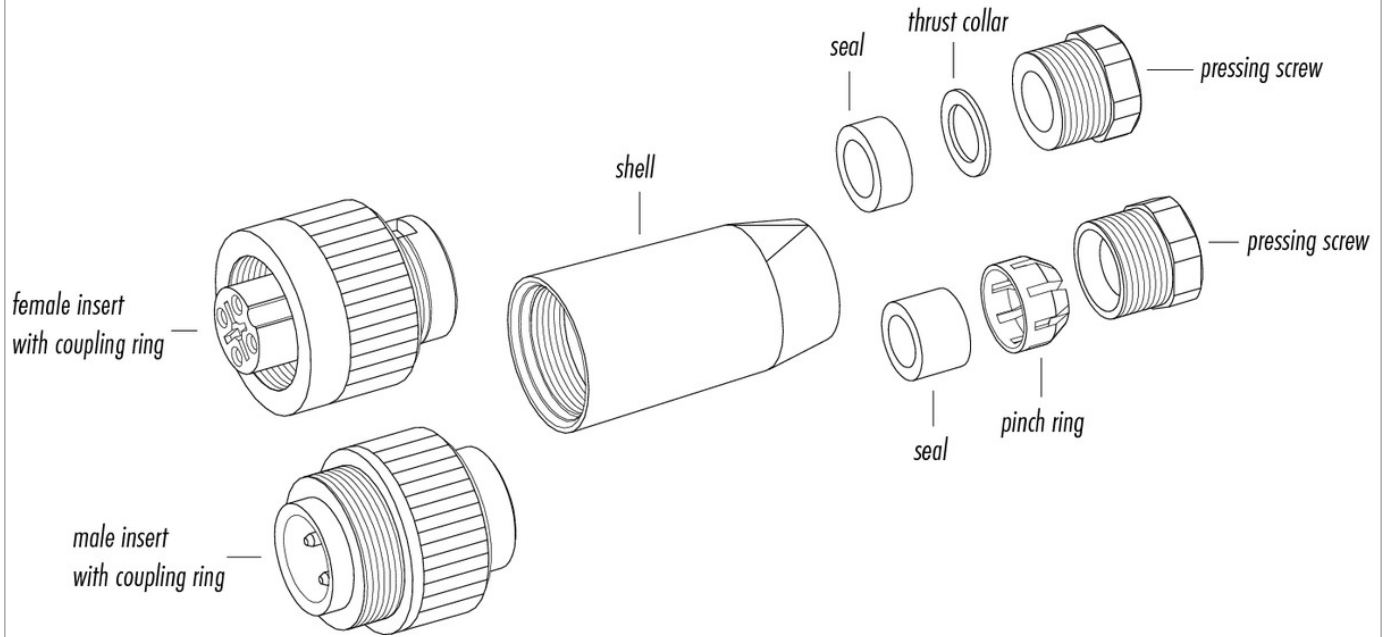
Area

RD24 Power Series 692/693

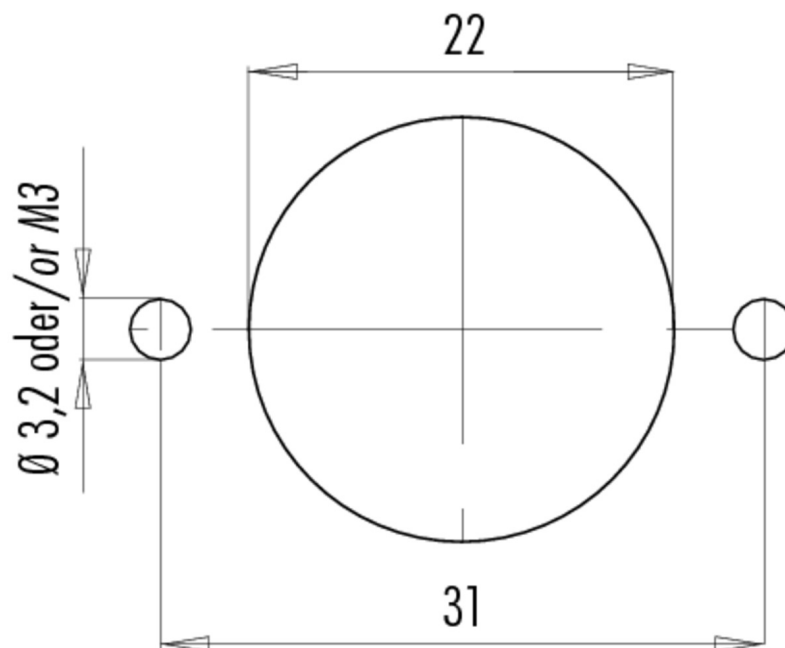
Order number

79 0232 050 04

### Component part drawing



### Assembly instructions / Panel cut-out



Product description	<b>Contacts: 3+PE, 4 x 1.5 PVC: female cable connector injection-moulded cable, cable length 5 m</b>
Area	<b>RD24 Power Series 692/693</b>
Order number	<b>79 0232 050 04</b>

## Security notices

The connector must not be connected or separated under load. Non-observance and incorrect use can result in personal injury.

The connectors are designed for use in plant, control system and electrical equipment. The end user is responsible for checking whether the connectors are suitable for use in other applications.

Connectors with degree of protection IP 67 and IP 68 are not suitable for use under water. When used outdoors, the connectors must be separately protected against corrosion. For further information about IP degrees of protection refer to 'Technical support' in the Download Centre.

To lock the cable connector to the equipment connector, the threaded ring is tightened until it is 'finger-tight' (approx. 50 cNm).