

SPECIFICATIONS

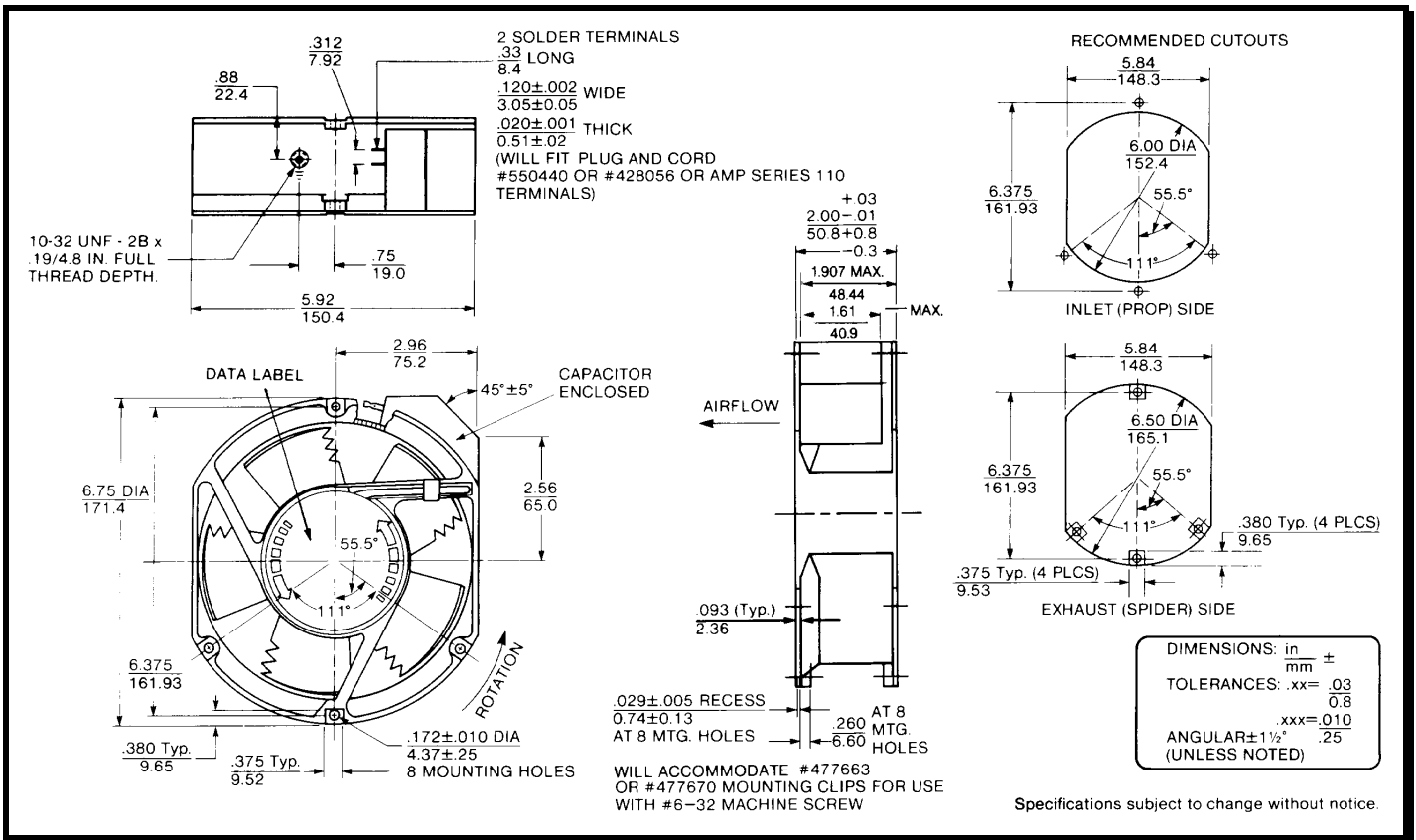
(RoHS Compliant)



Model Number: MR2B3
Part Number: 19028245A
SPEC Number: 26013777A01

Jan 24, 2013

Mechanical Drawing:



Motor:

Nominal Voltage = 115 VAC
 Frequency = 50 / 60 Hz
 Nominal Running Current = 0.27 / 0.26 amps
 Max. Locked Rotor Current = 0.48 / 0.47 amps
 Running Power = 30 / 31 watts
 Average Speed = 2850 / 3400 RPM
 Bearings = Ball
 Air Flow = 200 / 235 CFM
 Acoustic = 52.2 / 55.8 dBA

Construction:

Venturi: Single Piece Die Cast Aluminum, Black.
 Propeller: Plastic, Black, UL 94V-0

Life Expectancy:

This fan is designed for continuous duty life of 51,000 hours at 40°C.

Additional Features:

Permanent Split Capacitor Motor
 Thermal Protection
 Automatic Restart
 Impedance protected
 Operating Temperature: -10°C to 70°C
 Storage Temperature: -40°C to 85°C

Agency Approvals:

UL, CE

Additional Features:

0.110" Terminals