

- Bayonet locking system
- 2 – 24 contacts
- Degree of protection IP40
- Solder termination
- Diameter approx. 20 mm
- Touch-proof plastic housing



Description	Drawing	Contacts	Cable outlet	Ordering-No.
Male cable connector		3 DIN	4–6 mm	99 0605 00 03
		4		99 0609 00 04
		5		99 0613 00 05
		6 DIN		99 0617 00 06
		7		99 0621 00 07
		8 DIN		99 0645 00 08
		12	99 0649 00 12	

Male angled connector		3 DIN	4–6 mm	99 0605 70 03
		4		99 0609 70 04
		5		99 0613 70 05
		6 DIN		99 0617 70 06
		7		99 0621 70 07
		8 DIN		99 0645 70 08
		12	99 0649 70 12	

Female cable connector		3 DIN	4–6 mm	99 0606 00 03
		4		99 0610 00 04
		5		99 0614 00 05
		6 DIN		99 0618 00 06
		7		99 0622 00 07
		8 DIN		99 0646 00 08
		12	99 0650 00 12	

Female angled connector		3 DIN	4–6 mm	99 0606 70 03
		4		99 0610 70 04
		5		99 0614 70 05
		6 DIN		99 0618 70 06
		7		99 0622 70 07
		8 DIN		99 0646 70 08
		12	99 0650 70 12	

Specifications

Contacts	3 DIN	4	5	6 DIN	7	8 DIN	12	
Wire gauge	max. 0,75 mm ² (max. AWG 20)						max. 0,25 mm ² (max. AWG 24)	
Mechanical operation	> 500 Mating cycles							
Temperature range	– 40 °C / + 85 °C							
Rated voltage	250 V (32 V)			125 V (32 V)		60 V (32 V)		
Pollution degree	1 (2) ¹⁾							
Rated current (40°C)	7 A		6 A			5 A		
Contact plating	Ag (Silver)						Au (Gold)	
Material of housing	PA							

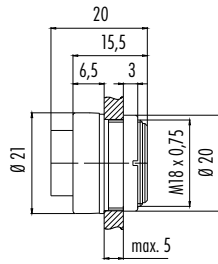
Description

Drawing

Contacts

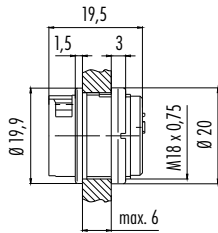
Ordering-No.

Male panel mount connector



3 DIN	99 0607 00 03
4	99 0611 00 04
5	99 0615 00 05
6 DIN	99 0619 00 06
7	99 0623 00 07
8 DIN	99 0647 00 08
12	99 0651 00 12

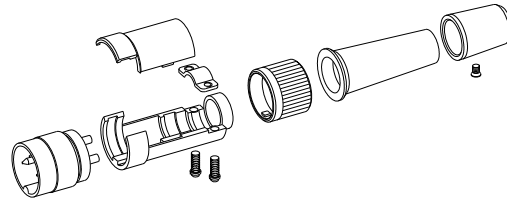
Female panel mount connector



3 DIN	99 0608 00 03
4	99 0612 00 04
5	99 0616 00 05
6 DIN	99 0620 00 06
7	99 0624 00 07
8 DIN	99 0648 00 08
12	99 0652 00 12

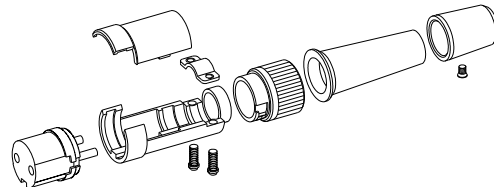
Component part drawing

Male cable connector



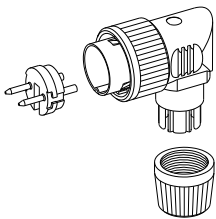
- Male insert
- Carrier sleeve
- Fillister head screw
- Strap
- Cover
- Locking ring
- Cable bushing
- Self-tapping screw
- Sleeve

Female cable connector



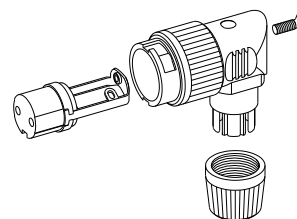
- Female insert
- Carrier sleeve
- Fillister head screw
- Strap
- Cover
- Locking ring
- Cable bushing
- Self-tapping screw
- Sleeve

Male angled connector



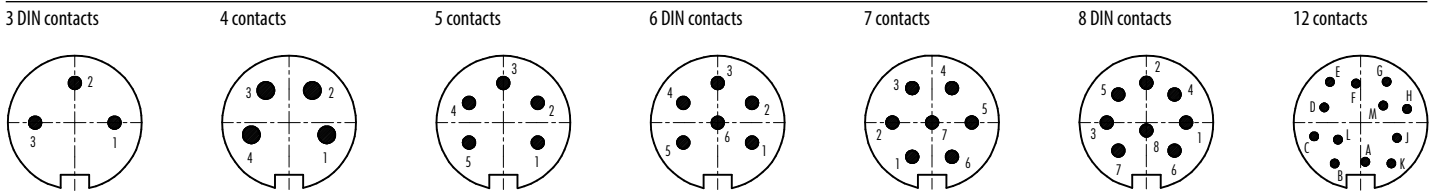
- Male insert
- Male angled housing
- Pressing screw
- Cable outlet not adjustable

Female angled connector

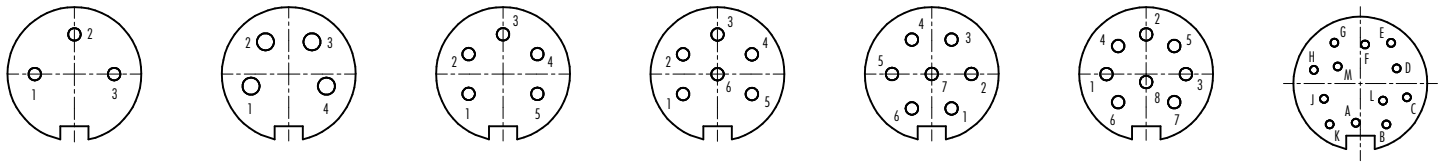


- Female insert
- Holding device
- Female angled housing
- Countersunk screw
- Pressing screw
- Cable outlet not adjustable

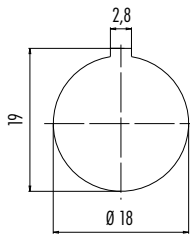
Contact arrangements male insert (mating side)



Contact arrangements female insert (mating side)



Panel cut out



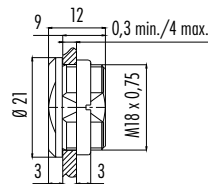
Description

Drawing

Ordering-No.

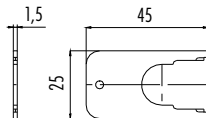
Blind plug

08 2668 000 001



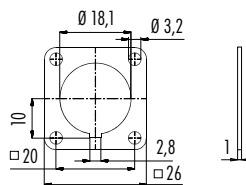
Mounting spanner for panel mount connectors

07 0010 001



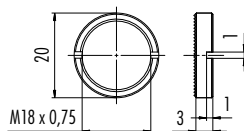
Rectangular flange for panel mount connectors, IP40

04 0106 001



Ring nut for fixing thread

01 0010 001 with knurled screw



Hexagonal nut

Thickness

Ordering-No.

2,5 mm 01 0146 001

5 mm 01 5006 001

