



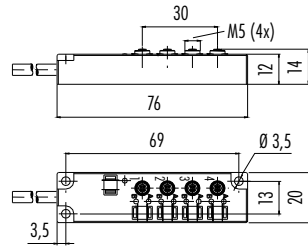
- M5, M8, M12 I/Os
- Degree of protection IP67
- 4- and 8-way
- With trunk cable, Central connector
- Field-wireable
- With LED showing operating voltage respectively the status

Description

Ready to connect 4-way M5 interface box



Drawing



Contacts

Cable length, PUR

Ordering-No.

4/3

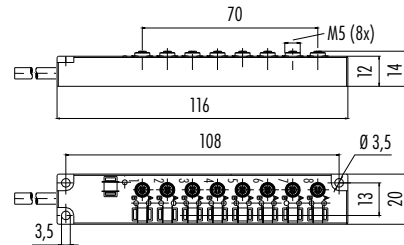
3 m

72 6327 30 04

5 m

72 6327 50 04

Ready to connect 8-way M5 interface box



4/3

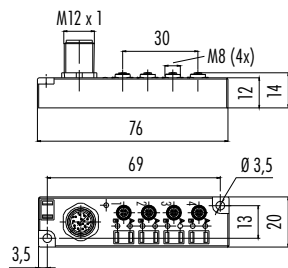
3 m

72 6333 30 08

5 m

72 6333 50 08

Pluggable 4-way M5 interface box with M12 connector

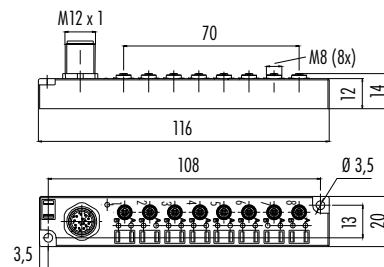


4/3

–

72 6325 00 04

Pluggable 8-way M5 interface box with M12 connector



4/3

–

72 6331 00 08

Specifications

Contacts	M5–4/3, 3	M8–3	M12–5/4, 5	M12–5/4, 5
Wire gauge	I/Os 0,14 mm ² (AWG 26), supply 2 x 0,25 mm ² (AWG 24)	I/Os 0,25 mm ² (AWG 24), supply 2 x 0,5 mm ² (AWG 22)	I/Os 0,34 mm ² (AWG 22), supply 3 x 0,75 mm ² (AWG 20)	max. 1,5 mm ² (max. AWG 16)
Mechanical operation	–	≥ 100 Mating cycles	≥ 100 Mating cycles	≥ 100 Mating cycles
Temperature range	– 25 °C / + 80 °C	– 30 °C / + 90 °C	– 25 °C / + 80 °C	– 25 °C / + 80 °C
Rated voltage	24 V DC	10–30 V	10–30 V	10–30 V
Pollution degree	3	3	3	3
Rated current (40°C)	1 A per contact, 2 A max.	2 A per contact, 6 A max.	2 A per contact, 10 A max.	2 A per contact, 9 A max.
Contact plating	Au (Gold)	Au (Gold)	Au (Gold)	Au (Gold)
Material of housing	PA	PA	PA	PA

M8 Distributors

Description

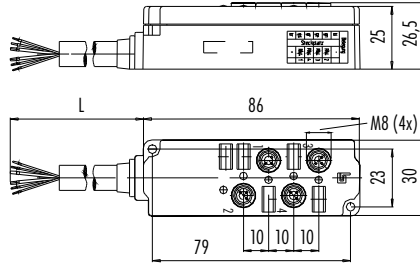
Drawing

Contacts

Cable length, PUR

Ordering-No.

Ready to connect 4-way M8 interface box with equipment-on LED (green) and functional indicator (yellow)



3

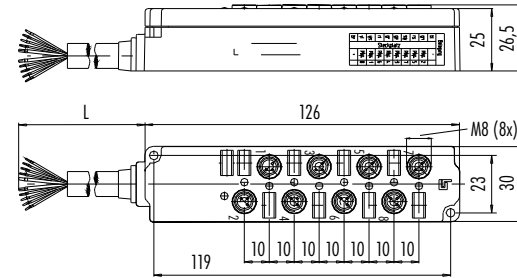
3 m

72 6326 30 04

10 m

72 6326 100 04

Ready to connect 8-way M8 interface box with equipment-on LED (green) and functional indicator (yellow)



3

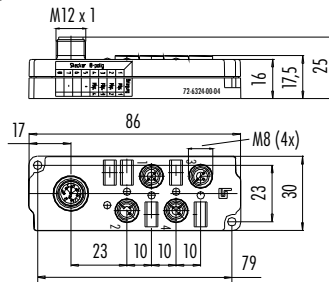
3 m

72 6332 30 08

10 m

72 6332 100 08

Pluggable 4-way M8 interface box with 8/6 pole M12 connector, equipment-on LED (green) and functional indicator (yellow)

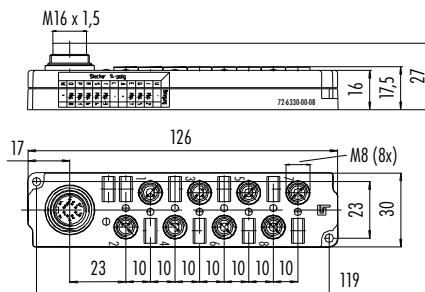


3

-

72 6324 00 04

Pluggable 8-way M8 interface box with 14 pole M16 connector, equipment-on LED (green) and functional indicator (yellow)



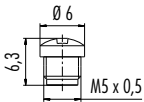
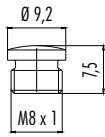
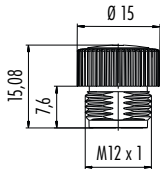
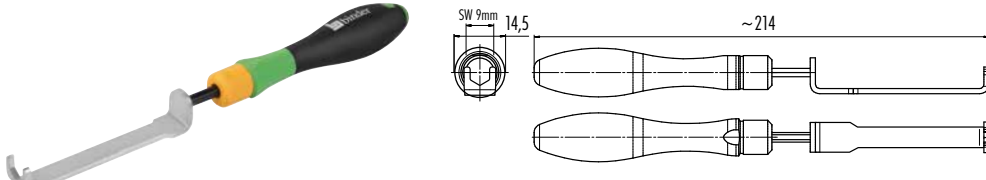
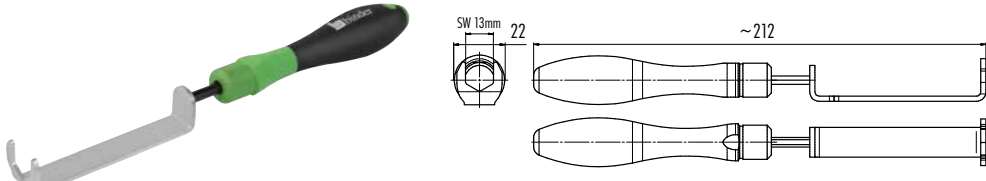
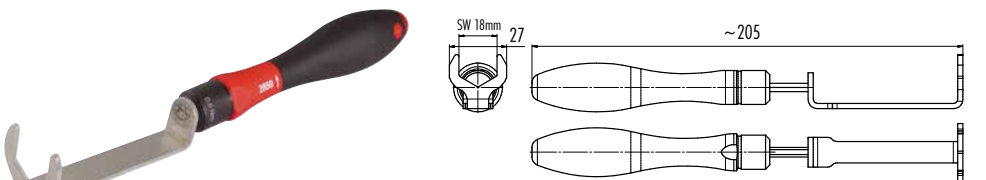



3

-

72 6330 00 08

M12 Distributors

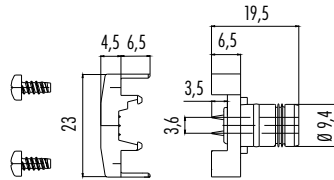
Description	Drawing	Contacts	Cable length, PUR	Ordering-No.
Ready to connect 4-way M12 interface box with equipment-on LED (green) and functional indicator (yellow), M12 Push-Pull-locking		5/4	3 m 5 m 10 m	72 6300 230 04 72 6300 250 04 72 6300 300 04
		5	3 m 5 m 10 m	72 6310 230 04 72 6310 250 04 72 6310 300 04
Ready to connect 8-way M12 interface box with equipment-on LED (green) and functional indicator (yellow), M12 Push-Pull-locking		5/4	3 m 5 m 10 m	72 6302 230 08 72 6302 250 08 72 6302 300 08
		5	3 m 5 m 10 m	72 6312 230 08 72 6312 250 08 72 6312 300 08
Pluggable 4-way M12 interface box with 12/19 pole M23 connector, equipment-on LED (green) and functional indicator (yellow), M12 Push-Pull-locking		5/4 5	- -	72 6303 200 04 72 6313 200 04
		5/4 5	- -	72 6305 200 08 72 6315 200 08
Pluggable 8-way M12 interface box with 12/19 pole M23 connector, equipment-on LED (green) and functional indicator (yellow), M12 Push-Pull-locking		5/4 5	- -	72 6305 200 08 72 6315 200 08
		5/4 5	- -	72 6306 200 04 72 6316 200 04
4-way M12 interface box for assembly, pluggable hood, screw termination, equipment-on LED (green) and functional indicator (yellow), M12 Push-Pull-locking		5/4 5	- -	72 6306 200 04 72 6316 200 04
		5/4 5	- -	72 6308 200 08 72 6318 200 08
8-way M12 interface box for assembly, pluggable hood, screw termination, equipment-on LED (green) and functional indicator (yellow), M12 Push-Pull-locking		5/4 5	- -	72 6308 200 08 72 6318 200 08

Description	Drawing	Ordering-No.
M5 protection cap for female connectors		08 2610 000 000
M8 protection cap for female connectors		08 2441 000 000
M12 protection cap for female connectors, IP67		08 2769 000 000
Mounting tool for M8 locking ring, 0,4 Nm		07 0085 000
Hexagon torque spanner SW 13 mm, 0,6 Nm		07 0086 000
Hexagon torque spanner SW 18 mm, 0,6 Nm		07 0079 000
Mounting tool for M12 locking ring		07 0078 000
Label for M8 interface boxes		16 0796 000
Label for M12 interface boxes		16 0809 000

- Flat cable clamps for the connection of AS interface and cables
- With round cable
- Mounting clamps for mounting in customer devices

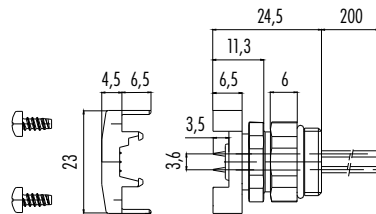
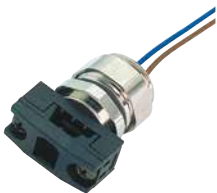


Description	Drawing	Contacts	Ordering-No.
Mounting clamp, flat cable termination		2	99 6440 00 02



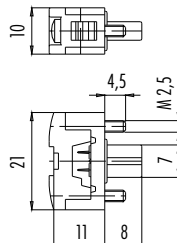
Socket clamp, 2 x 0,25 mm², positioning possible, flat cable termination

Contacts	Fixing thread	Ordering-No.
2	PG 9	99 6441 00 02
	M16 x 1,5	99 6441 100 02
	M20 x 1,5	99 6441 105 02



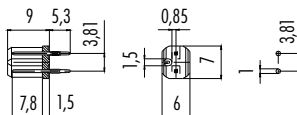
Female cable connector, flat cable termination, with label and fixing screws

Contacts	Ordering-No.
2	99 6442 00 02



Male receptacle, dip-solder contacts

2	09 6443 00 02
---	---------------



Specifications

Contacts	2
Wire gauge	0,25 mm ² (AWG 24), 1,5 mm ² (AWG 16)
Mechanical operation	max. 10 Mating cycles of termination frequency
Temperature range	-25°C / +70 °C
Rated voltage	10-30V
Pollution degree	3
Rated current (40°C)	2 A per contact
Contact plating	Au (Gold), Sn (Tin)
Material of housing	PA

Description

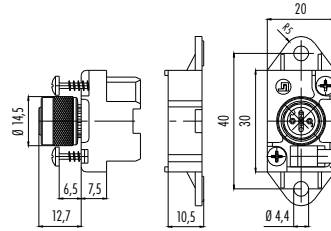
Drawing

Contacts

Ordering-No.

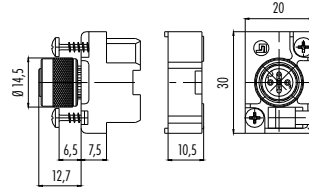
Flat cable clamp, M12 outlet, further parts can be added,
lower part with fixing straps

2 99 6410 00 02



Flat cable clamp, M12 outlet, further parts can be added,
lower part without fixing straps

2 99 6411 00 02



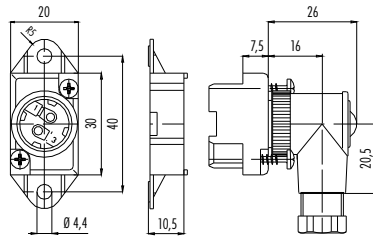
Flat cable clamp, assembly possible, M12 outlet, further parts can be added,
lower part with fixing straps

Contacts

Cable outlet

Ordering-No.

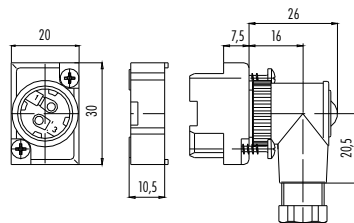
2 4–6 mm 99 6430 00 02
6–8 mm 99 6432 00 02



Flat cable clamp, assembly possible, M12 outlet, further parts can be added,
lower part without fixing straps

2

4–6 mm 99 6431 00 02
6–8 mm 99 6433 00 02



Description	Drawing	Contacts	Cable length, PUR	Cable gauge	Ordering-No.
Connecting cable, connector for distribution—female cable connector M12, further parts can be added, lower part with fixing straps		2	1 m	2 x 0,75 mm ²	79 6420 10 02
			2 m		79 6420 20 02
			3 m		79 6420 30 02



Connecting cable, connector for distribution—female angled connector M12, further parts can be added, lower part with fixing straps		2	1 m	2 x 0,75 mm ²	79 6424 10 02
			2 m		79 6424 20 02



Connecting cable, connector for distribution—female cable connector M12, further parts can be added, lower part without fixing straps		2	1 m	2 x 0,75 mm ²	79 6421 10 02
			2 m		79 6421 20 02

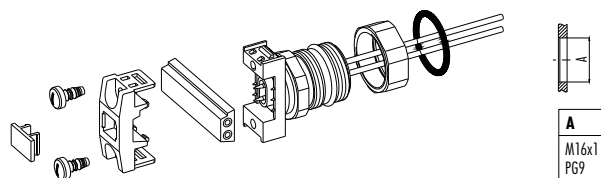


Connecting cable, connector for distribution—female angled connector M12, further parts can be added, lower part without fixing straps		2	1 m	2 x 0,75 mm ²	79 6425 10 02
			2 m		79 6425 20 02



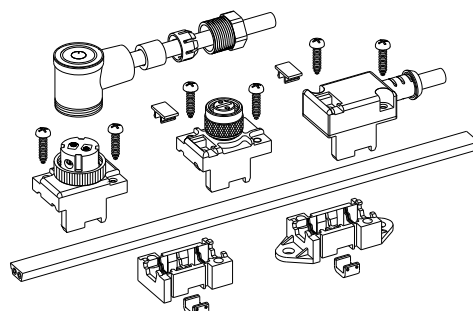
Component part drawing

Socket clamp



- Label
- Pressing piece
- Fixing screw
- AS interface-cable
- Housing for built-in connector
- Positioning screw
- O-ring

Flat cable clamp



- Strap without lower part for connectors for distribution
- Strap with lower part for connectors for distribution
- Fixing clip
- AS interface-cable
- Fixing screw
- Label

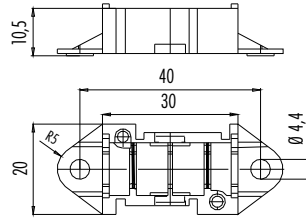
Description

Drawing

Ordering-No.

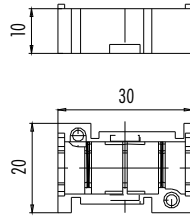
Fixing strap for flat cable with lower part for connectors for distribution

16 0810 000



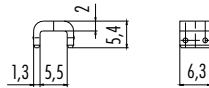
Fixing strap for flat cable without lower part for connectors for distribution

16 0811 000



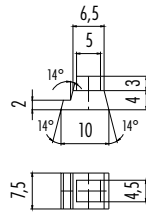
Fixing clip to add further connectors for distribution

02 0208 000



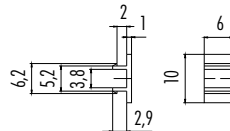
Flat cable seal for connectors for distribution (cable will not be lead through)

16 0792 000



Label for M8 interface boxes

16 0796 000



Label for M12 interface boxes

16 0809 000

